

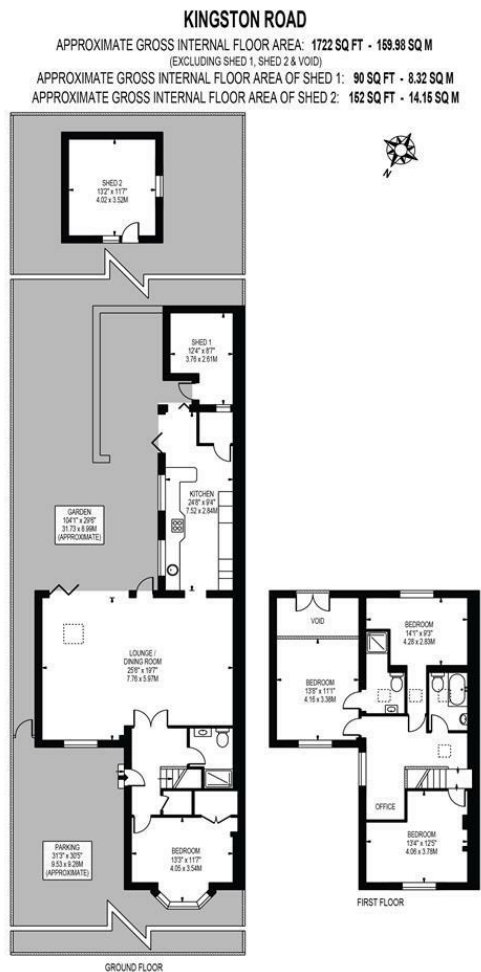
## Kingston Road Wimbledon, SW19 3NX

**£1,300,000 Freehold**



Ellisons are delighted to present this spacious four-bedroom semi-detached Victorian house offering over 1,700 sq.ft space within close proximity to the Broadway, excellent local schools and fantastic commuter routes. Having been impressively extended on the ground floor the house boasts a bright and welcoming open-plan living/dining area with fully fitted kitchen and utility room. The beautiful landscaped rear garden (of over 100ft in length) is accessed directly from the reception room via the full width bi-fold doors. The ground floor also benefits from a double bedroom and family bathroom. Upstairs, there are three generously proportioned bedrooms, two bathrooms, and a well-designed study space, providing excellent flexibility for modern family living. Further benefits include off-street parking for two cars and further potential to extend STPP.

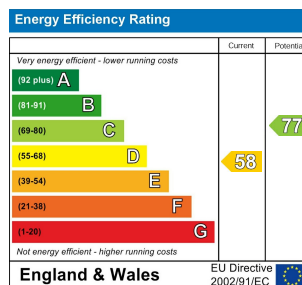




FOR ILLUSTRATION PURPOSES ONLY

THIS FLOOR PLAN SHOULD BE USED AS A GENERAL OUTLINE FOR GUIDANCE ONLY AND DOES NOT CONSTITUTE IN WHOLE OR IN PART AN OFFER OR CONTRACT. ANY INTENDING PURCHASER OR LESSEE SHOULD SATISFY THEMSELVES BY INSPECTION, SEARCHES, ENQUIRIES AND FULL SURVEY AS TO THE CORRECTNESS OF EACH STATEMENT. ANY AREAS, MEASUREMENTS OR DISTANCES QUOTED ARE APPROXIMATE AND SHOULD NOT BE USED TO VALUE A PROPERTY OR BE THE BASIS OF ANY SALE OR LET.

- Semi-Detached Victorian Home
- Four Bedrooms & Three Bathrooms
- Open-Plan Living/Dining Room
- Fitted Kitchen And Utility Room
- Landscaped South-Facing Garden (over 100ft in length)
- Off-Street Parking For Two Cars
- Excellent Transport Links and Outstanding Schools Nearby
- Freehold
- Council Tax Band D
- EPC Rating D



**For Free Mortgage Quote and Best Mortgage Rates, call an Ellisons Mortgage Advisor on 020 8944 9494**



Although these particulars are believed to be correct, their accuracy is not guaranteed and they do not form part of any contract.

**Celebrating 30 years of successful Sales and Lettings in Merton**

